

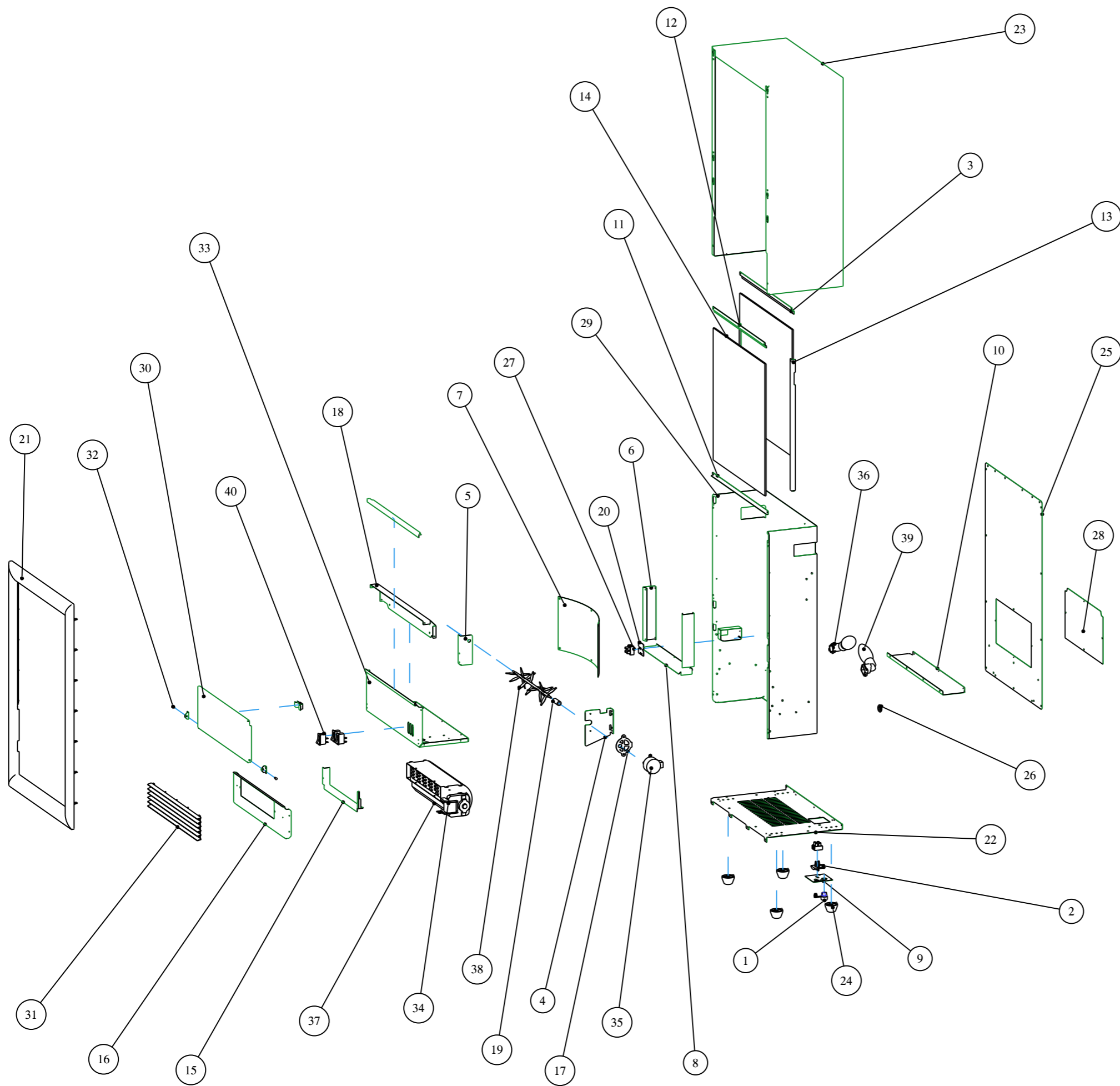
SCALE 0.150

NO.	PART NO.	DESCRIPTION	QTY
1	3_22008_0	MOZART SURROUND	1
2	1/64182/0	SURROUND FIXING	4
3	7/19449/0	VIOTTA ASSEMBLY	1

**GLEN DIMPLEX** RESEARCH & DEVELOPMENT  
 Dunleer, Co.Louth, Ireland. Tel: 041 9800204. Fax: 041 6851464.

THIS DRAWING IS SUPPLIED IN CONFIDENCE AND THE COPYRIGHT THEREOF IS THE PROPERTY OF GLEN DIMPLEX : IT MUST NOT BE USED BY A THIRD PARTY WITHOUT PRIOR PERMISSION. ©2002

DRAWN BY	RC	<b>A3</b>	TITLE
DATE	09/03/07		MOZART ASSY
SCALE	0.15		DRG NO
ISSUE			7/19681/0
PROJECT	MOZART		



NO.	PART NO.	DESCRIPTION	QTY
1	1/13433/0	STRAIN RELIEF BUSH	1
2	1/30171/0	TERMINAL MOUNTING	1
3	1/61842/0	GLASS FIXING BRACKET TOP	1
4	1/61861/0	MOTOR BRACKET	1
5	1/61862/0	AXIAL BRACKET	1
6	1/61864/0	REFLECTOR FIXING BRACKET	2
7	1/61868/0	FLAME REFLECTOR	1
8	1/61893/0	LIGHT BAFFLE TOP	1
9	1/61901/0	TERMINAL BRACKET	1
10	1/61906/0	REAR LIGHT BAFFLE	1
11	1/61915/0	FRONT GLASS FIXING BRACKET	1
12	1/61928/0	GLASS FIXING BRACKET	1
13	1/61929/0	REAR GLASS	1
14	1/61930/0	FRONT GLASS	1
15	1/62014/0	ELEMENT BAFFLE	1
16	1/62023/0	GRILLE BRACKET	1
17	1/62597/0	GEARED MOTOR PAD	1
18	1/62896/0	CONTROL COVER	1
19	1/63100/0	ROTISSERIE COUPLING	1
20	1/63101/0	INSULATION PAD	1
21	1/64076/0	VIOTTA SURROUND	1
22	1/64110/0	VIOTTA BASE	1
23	1/64148/0	VIOTTA BODYWRAP	1
24	1/64181/0	FOOT	4
25	1/64189/0	VIOTTA BACK PANEL	1
26	1/64318/0	GROMMIT ID10 OD20	1
27	2/16687/0	2 WAY TERMINAL BLOCK	2
28	2/19419/0	ACCESS PANEL ASSEMBLY	1
29	2/19429/0	CHASSIS SW ASSY	1
30	2/19448/0	FLAP WELD ASSY	1
31	2/19468/0	OUTLET GRILLE	1
32	2/19512/0	HINGE ASSEMBLY	2
33	2/19539/0	CONTROL PANEL SW ASSY	1
34	3/21579/0	CHINESE ELEMENT	1
35	3/21728/0	CHINA ONLY GEARED MOTOR 10RPM	1
36	3/21734/0	FUERJ E12 LAMPHOLDER	2
37	3/21822/0	240V FUERJ BLOWER 255L X 60	1
38	3/21828/0	PORTASTOVE ROTISSERIE	1
39	3/21838/0	60W CANDLE BULB	2
40	3/21880/0	SOKEN SWITCH	3

**GLEN DIMPLEX** RESEARCH & DEVELOPMENT  
 Dunleer, Co.Louth, Ireland. Tel: 041 9800204. Fax: 041 6851464.

THIS DRAWING IS SUPPLIED IN CONFIDENCE AND THE COPYRIGHT THEREOF IS THE PROPERTY OF GLEN DIMPLEX : IT MUST NOT BE USED BY A THIRD PARTY WITHOUT PRIOR PERMISSION ©2002

DRAWN BY	AHD	<b>A3</b>	TITLE
DATE	21/02/07		VIOTTA ASSEMBLY
SCALE	0.085		DRG NO
ISSUE			7/19449/0
PROJECT	VIOTTA		